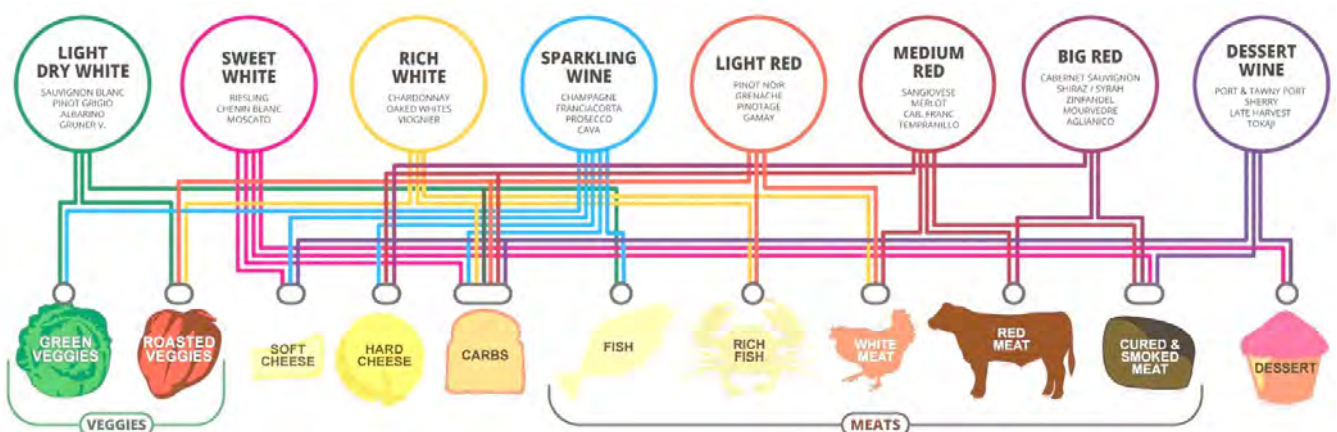


Kia Ora!

Our wine offering has both breadth and depth, with New Zealand wines, especially our locally produced Central Otago offering, taking centre stage. With healthy offerings internationally, most notably from France and Australia, we are sure to have a wine to suit everybody’s palate. Our wines are acquired from both vineyard libraries and private cellars and each bottle tells the distinctive story of its origins – the terroir, the winemaker, and the vintage. At The Rees Hotel we have developed a private cellar of one of the most comprehensive collections of fine Bordeaux wines in New Zealand, complemented by some of the great names in Burgundy. Our cellar also celebrates the growing international stature of the best winemakers of our homeland. It is our firm belief that there is an unserved appetite amongst discerning people for the opportunity to savour the best wines in the world alongside the best from New Zealand – and to know more about the distinctive provenance of the wines they favour.

We are more than happy to help you if you have any questions or would like advice choosing the best wine for you.

*The * signifies certified organic winery*



Struggling to find the perfect match for your dish? The above diagram shows tried and tested combinations for different food groups. Should you like assistance in picking the ideal wine, please do not hesitate to ask your wait staff.



TABLE OF CONTENTS

TABLE OF CONTENTS	2
WINE REGIONS OF NEW ZEALAND	4
CENTRAL OTAGO AND THE WAITAKI - WINE PRODUCTION	5
WINES BY THE GLASS	6
BEERS	8
MOCKTAILS.....	8
SPIRITS & LIQUEURS.....	8
LARGE FORMAT – MAGNUMS AND JEROBOAMS	11
HALF BOTTLES – 375ML	13
SPARKLING WINE	14
CHAMPAGNE	14
MARLBOROUGH AND NELSON - WINE PRODUCTION.....	Error! Bookmark not defined.
NEW ZEALAND ROSE	15
NEW ZEALAND SAUVIGNON BLANC	15
NEW ZEALAND RIESLING.....	20
NEW ZEALAND PINOT GRIS.....	21
NEW ZEALAND VIOGNIER.....	21
NEW ZEALAND CHENIN BLANC	22
NEW ZEALAND INTERESTING WHITES	22
AUSTRALIA - WINE PRODUCTION	Error! Bookmark not defined.
AUSTRALIA - WHITE	23
SOUTH AFRICA – WHITE	23
USA – WHITE.....	23
ITALY – WHITE	23
ARGENTINA – WHITE.....	23
JAPAN – WHITE.....	23
BURGUNDY - WINE PRODUCTION.....	Error! Bookmark not defined.
FRANCE – WHITE BURGUNDY	24
WAIRARAPA (MARTINBOROUGH) - WINE PRODUCTION	Error! Bookmark not defined.



NEW ZEALAND PINOT NOIR.....	26
NEW ZEALAND SYRAH	30
AUCKLAND, WAIHEKE ISLAND AND NORTHLAND - WINE PRODUCTION	Error! Bookmark not defined.
NEW ZEALAND CABERNET SAUVIGNON	32
ARGENTINA – RED.....	35
ARGENTINA - WINE PRODUCTION	35
ITALY - RED	36
ITALY - WINE PRODUCTION	36
SPAIN – RED.....	38
SPAIN - WINE PRODUCTION	38
USA – RED.....	39
AUSTRALIA – RED.....	40
FRANCE – SOUTHERN FRANCE	41
FRANCE – CÔTE DU RHÔNE.....	41
CÔTES DU RHÔNE - WINE PRODUCTION	Error! Bookmark not defined.
FRANCE – RED BURGUNDY	42
BORDEAUX - WINE PRODUCTION	Error! Bookmark not defined.
FRANCE - BORDEAUX	43
LEFT BANK.....	43
RIGHT BANK.....	45
DESSERT WINES	46
PORT	46



WINE REGIONS OF NEW ZEALAND

The wine regions in New Zealand are spread throughout the country, from Central Otago in the south to Northland in the north. Despite being a relatively small country, the geography is dictated by its volcanic and glacial history, and this provides a huge variety of soil types and landscapes which contribute to New Zealand's varied wine industry. As well as the change in latitude producing varying climatic conditions from North to South, the landscape also produces microclimates on top of this. We see a climatic variation from East to West with the prevailing weather patterns typically coming from the West. With no land mass to break these up until South America, the West Coast sees wild and treacherous conditions, a stark contrast to the relatively calm and tranquil weather typically seen on the East Coast. Wine producers therefore have a myriad of options when deciding what to grow and where to grow.

There are over 2000 vineyards in New Zealand, just 0.5% of the world's total plantings. Despite this, quality has won over quantity. Since the 1980's, when New Zealand Sauvignon Blanc broke onto the international stage, the reputation of all New Zealand wine has only grown and spread across the world. Throughout this wine list, we will introduce each wine region and discuss what makes them so unique. These will serve as comparisons to our 'Old World' examples of the same grape varieties.





CENTRAL OTAGO AND THE WAITAKI - WINE PRODUCTION

Central Otago is one of the youngest wine regions in New Zealand with commercial vineyards only being planted in the 1980s. Despite this, it has earned international acclaim for its Pinot Noir in particular. With a latitude matching that of Burgundy, it is perhaps no surprise that Pinot Noir and Chardonnay flourish. Not bound to the strict winemaking laws in France though, the region has also been able to show its strength in other varieties.

Due to the cool climate in the most southerly wine making region in the country/world, the wines are delicate and elegant. Because of this, wines from the region tend to have a lighter winemaking influence, particularly regarding oak use. If used at all, it is primarily old oak used, so as not to overpower the delicate fruit flavours. White wines show bright green and citrus fruit flavours setting them apart from the rest, and the red wines show subtle, complex flavour profiles, with delicate red fruit at the forefront.

Several winemaking sub-regions make up Central Otago. Gibbston is the coolest, sitting at a slightly higher altitude to the Cromwell Basin. It therefore tends to produce lighter wine with more herbaceous flavours coupled with red fruit. Bendigo is the furthest north and warmest sub-region. It is also the driest due to its location furthest east from the Pisa Range which produces a rain shadow from the very heavy rainfall on the West Coast. As such, it produces darker fruit flavours and can handle slightly more oak influence. Bannockburn is a slight anomaly. Despite being the furthest south, it has a very high average temperature. This is due to the amphitheatre of mountains surrounding it, which create a heat trap. It also faces directly north increasing the hours of sunlight it sees each day. It produces some of the highest regarded wine from the region. With climate warming having an ever-increasing impact, some producers are starting to experiment with the thicker-skinned Syrah. This practice is very much in its infancy, but it could be Central Otago's future.

Despite sitting further north, the Waitaki Valley is New Zealand's coolest and smallest wine growing region, with temperatures cooled by regular winds whipping through the valley from the east coast. Plantings are limited, totalling just 60ha, and take a lot of work to do well.

Varietal Production

Despite the fame, only 5% of New Zealand's vines are planted in Central Otago. Of this:

Pinot Noir – 81%

Chardonnay – 4%

Pinot Gris – 8%

Riesling – 3%

Sauvignon Blanc – 2%

Other – 2%





WINES BY THE GLASS

NV Taittinger Brut Reserve	Reims, France	(120ml)	33.5
NV Quartz Reef Methode Traditionelle*	Bendigo, Central Otago	(120ml)	19.5

2024 Wanaka Village Rosé*	Wanaka, Central Otago		17.5

2019 Villa Maria Southern Clays Sauvignon Blanc	Marlborough		17.5
2024 Quartz Reef Pinot Gris*	Bendigo, Central Otago		18.5
2023 Domaine Thomson Clutha Left Bank Chardonnay	Lowburn, Central Otago		17.5

2023 Tinwald Farm Pinot Noir	Pisa, Central Otago		17.5
2023 Aurora Legacy Syrah	Central Otago		16.5
2019 Vidal Reserve Merlot/Cabernet	Hawkes Bay		19

2025 Valli Dolce Vita Late Harvest Riesling	Waitaki	(90ml)	22

PREMIUM WINES BY THE GLASS - CORAVIN SELECTION

A selection of wines picked by our Sommelier, showcasing some of the best wines in our cellar.

Coravin – Unparalleled in craftsmanship and design, Coravin uses patented technology to pour wine from a bottle without pulling the cork. Wine enthusiasts can now enjoy wine sealed with corks without feeling the need to commit to the whole bottle, allowing them to explore wines of any vintage, varietal or region, one taste at a time.

Premium White Wines **90ml** **150ml**

2009 Pegasus Bay Riesling, Waipara \$26.5 \$45

Founded by the Donaldson family in the 1970s, Pegasus Bay has evolved into one of North Canterbury’s defining family-run estates. This Riesling shows vibrant notes of white peach, nectarine, citrus blossom, jasmine, and lychee, with a concentrated yet poised palate, balanced by bright acidity and a lingering, off-dry finish. It captures the beauty of winemaking—how a grape that originated in Germany can find such expressive and elegant form in New Zealand.

2010 Vidal Legacy Chardonnay, Hawkes Bay \$35 \$45

Over 150 years ago, Anthony Vidal journeyed from Barcelona to New Zealand, helping pioneer viticulture and laying the foundations for a legacy of patience and craftsmanship. Today, Vidal Estate Legacy, crafted by Hugh Crichton, reflects over a century of excellence—showcasing an elegant, refined Chardonnay. With notes of citrus, flint, and roasted nuts, it offers a seamless, mineral-driven palate that is balanced and built to age gracefully. This bottle has been opened to elegantly demonstrate the versatility and enduring appeal of Chardonnay.



Premium Red Wines

2012 Foxes Island Le Renard Pinot Noir, Marlborough \$28 \$47

Le Renard Pinot Noir 2012 is an elegant, cellar-aged Marlborough Pinot Noir from the Awatere Valley. It shows layered notes of wild cherry, dried rose and subtle spice, with a silky palate, fine tannins and a long, savoury finish. Complex and beautifully balanced, it's crafted to age gracefully and drink superbly now. We've opened this exceptional Marlborough Pinot Noir for our guests to experience – a distinctive expression that subtly steps beyond the familiar style of Central Otago.

2019 Radburn Cellars Syrah, Hawkes Bay \$28 \$45.5

Kate Radburn is one of New Zealand's highly respected winemakers, with over 40 years experience in wine making and sharing the knowledge. Kate grew up around the warmth of family dinners, where wine was more than a drink. Those early experiences sparked a lifelong passion, blending her scientific curiosity with the art of winemaking. All wines produced by Radburn Cellars showcase the finest wines from each vintage – small, handcrafted, uncompromising. This Syrah is dark brooding, with pure floral fragrance, elegant, graceful and restrained. This is our way of sharing Kate's story with everyone visiting Queenstown and creating a memory.



BEERS

Altitude Brewery Range

Central Otago

14

Queenstown Lager

Sled Dog Hazy Pale Ale

Mischievous Kea IPA

Ruaille Buaille Irish Stout

Good Times 0% alc.

Powder Day Pilsner

Sunshine Range

Gisborne

12

Pale Ale

Light Pilsner

Others

Peroni

Italy

12

Tiny Pale Ale 2.5%

Queenstown

14

Steinlager Ultra low carb

New Zealand

10

COCKTAILS

Kawakawa Gimlet

24

Kawakawa-infused Gin, citrus, Kawakawa syrup

Seaweed Martini

Wakame-infused Vodka, Scapegrace white vermouth, fennel vinegar, yuzu, nori

Plum sour

Whiskey, Amaretto, plum, earl grey, citrus, egg white

Jaffa Espresso Martini

Vodka, espresso, orange liquor, coffee liquor

MOCKTAILS

Sparkling Plum Tea

16

Plum, ginger beer, lime juice and soda

Warm Apricot Toddy

Apricot, ginger, lemon juice, honey, cinnamon



SPIRITS & LIQUEURS

Gin

Black Robin	16
Bombay Sapphire	14
Broken Heart	15
Broken Heart Rhubarb	18
Hendricks	16
Source	19
Source Barrel Aged	24
Tanqueray	14

Vodka

42 Below	14
Blue Duck	15
Belvedere	14
Grey Goose	14

Tequila

Cazcabel Blanco	14
Herradura Silver	18

Rum

Appleton VX	12
Bacardi White	14
Broken Heart Spiced	15
Captain Morgan	12
Kraken	14

Grappa

Antinori Tignanello Grappa	30
----------------------------	----

Sake

Zenkuro Drip-Pressed	19
----------------------	----

Bourbon

Maker's Mark	14
Wild Turkey	12
Willett's Pot Still	35
Woodford Reserve	15

Blended Scotch Whiskey

Chivas Regal 12yr	18
Chivas Regal Royal Salute 21yr	38
Monkey Shoulder	17
Johnnie Walker Black	14
Johnnie Walker Blue	42

Single Malt Scotch Whiskey

Ardberg 10yr	22
Glenfiddich 12yr	15
Glenlivet Founder's Reserve	16
Glenmorangie 10yr	18
Glenmorangie 18yr	35
Laphroaig 10yr	19
Talisker 10yr	23

NZ Whisky

Cardrona THE FALCON	48.5
---------------------	------

International Whiskey

Canadian Club	14
Jack Daniels	15
Jameson's	14
Teeling Small Batch Irish	17

Brandy / Cognac / Armagnac

Courvoisier VS	18
St Remy VSOP	22
Delamain Vesper	37
Delamaine Pale & Dry Cognac XO	35
Hennessy XO	45

All spirits and liqueurs are 30ml pours unless stated otherwise.



Aperitifs and Liqueurs

Amaretto	14
Aperol	12
Baileys	12
Broken Heart Wild Plum Elixir	14
Cachaça	12
Campari	14
Chambord	12
Cointreau	11
Drambuie	12
Frangelico	12
Lillet Blanc	(60ml) 11
Midori	14
Peach Schnapps	12
Quick Brown Fox	15
Rose Rabbit Butterscotch	21
Rose Rabbit Elderflower	21
Rose Rabbit Orange	21
Rose Rabbit Aged Cherry	21
Tuaca Vanilla	11

Choya Umeshu Classic	(60ml) 11
Choya Plum Liqueur	(60ml) 15

Vermouth

Scapegrace dry vermouth	12
Scapegrace sweet vermouth	12
Dolin Vermouth Blanc	14

Port & Sherry (60ml)

Taylor's Fine Tawny Port	17
Warres Optima 10yrs Port	25
Penfold's Grandfather Rare Tawny 20yo.	36
Lustau Manzanilla Papirusa.	15
Lustau Pedro Ximenez San Emilio	30

Bottled Water

Antipodes Still/Sparkling	(500ml) 10
Antipodes Still/Sparkling	(1L) 16

Bottled Carbonated

Karma Cola	6
Karma Cola Sugar Free	
Lemonade	
Ginger Ale	
Ginger Beer	
Soda Water	
Fever Tree Tonic Water	

Benjer Juices

Apple	6
Apple & Boysenberry	
Orange	

Hot Drinks

Long Black, Espresso, Americano	6
Flat White, Latte, Cappuccino, Macchiato, Mocha, Piccolo	6.5
Cadbury's Hot Chocolate	6.5
Tea Total (Loose Leaf)	6
- Chamomile	
- Earl Grey	
- English Breakfast	
- Ginger Kawakawa Spice	
- Jade Green Sencha	
- Otago Summer Fruit	
- Peppermint	

All spirits and liqueurs are 30ml pours unless stated otherwise.



LARGE FORMAT – MAGNUMS AND JEROBOAMS

CHAMPAGNE

NV Taittinger Brut Reserve	<i>Reims, France</i>	535
----------------------------	----------------------	-----

AROMATICS

2013 Rippon Gewurztraminer*	<i>Wanaka, Central Otago</i>	275
2008 Rippon 'Mature Vine' Riesling*	<i>Wanaka, Central Otago</i>	285

CHARDONNAY

2016 Villa Maria Gisborne Reserve Barrique	<i>Marlborough</i>	285
2014 Villa Maria Gisborne Reserve Barrique	<i>Marlborough</i>	295
2016 Clearview Reserve	<i>Hawkes Bay</i>	275
2016 Vidal Legacy	<i>Hawkes Bay</i>	285
2014 Kumeu River Estate	<i>Auckland</i>	275
2013 Kumeu River Mates	<i>Auckland</i>	525
2016 Felton Road Block 2* (3L)	<i>Bannockburn, Central Otago</i>	785
2014 Felton Road Block 2* (3L)	<i>Bannockburn, Central Otago</i>	825

PINOT NOIR

2018 Aurora 'The Partners' Pinot Noir	<i>Bendigo, Central Otago</i>	240
2016 Quartz Reef	<i>Bendigo, Central Otago</i>	355
2018 Quartz Reef Bendigo Estate Single Ferment	<i>Bendigo, Central Otago</i>	415
2015 Quartz Reef Bendigo Estate Single Ferment	<i>Bendigo, Central Otago</i>	445
2013 Prophets Rock	<i>Bendigo, Central Otago</i>	540
2019 Akitu A1	<i>Wanaka, Central Otago</i>	415
2015 Felton Road Block 3*	<i>Bannockburn, Central Otago</i>	635
2019 Felton Road Calvert*	<i>Bannockburn, Central Otago</i>	495
2016 Felton Road Calvert*	<i>Bannockburn, Central Otago</i>	545
2019 Felton Road Cornish Point*	<i>Bannockburn, Central Otago</i>	495
2013 Villa Maria Southern Clays	<i>Marlborough</i>	345
2011 Dry River	<i>Martinborough</i>	575
2016 Craggy Range Aroha	<i>Martinborough</i>	775
2019 Ata Rangi Old Vine Abel 82/130	<i>Martinborough</i>	1550



PINOT NOIR (CONTINUED)

2019 Akitu A1 (3L)	<i>Wanaka, Central Otago</i>	845
2008 Rippon Emma's Block* (3L)	<i>Wanaka, Central Otago</i>	1550
2008 Rippon Tinker's Field* (3L)	<i>Wanaka, Central Otago</i>	1550
2013 Felton Road * (3L)	<i>Bannockburn, Central Otago</i>	925
2014 Felton Road Block 5* (3L)	<i>Bannockburn, Central Otago</i>	1450

SYRAH

2016 Villa Maria Reserve Syrah	<i>Marlborough</i>	325
2016 Vidal Legacy Syrah	<i>Hawkes Bay</i>	315
2016 Craggy Range Le Sol Syrah	<i>Hawkes Bay</i>	775
2019 Radburnd Cellars Syrah	<i>Hawkes Bay</i>	775
2012 Glaetzer Amon Ra Shiraz	<i>Barossa Valley, South Australia</i>	585

BORDEAUX BLENDS

2010 Villa Maria Merlot Cabernet Sauvignon	<i>Marlborough</i>	415
2009 Villa Maria Cabernet Sauvignon	<i>Marlborough</i>	435
2016 Vidal Legacy Cabernet Sauvignon	<i>Hawkes Bay</i>	315
2013 Vidal Legacy Cabernet Merlot	<i>Hawkes Bay</i>	365
2017 Te Mata Coleraine Cabernet Sauvignon Merlot	<i>Hawkes Bay</i>	835
2007 Te Mata Coleraine Cabernet Sauvignon Merlot	<i>Hawkes Bay</i>	895
2018 Paritua 2112 Cabernet Merlot (5L)	<i>Hawkes Bay</i>	1950
1988 Gruaud Larose (3L)	<i>St-Julien, Bordeaux France</i>	2850

DESSERT WINES

1990 Château d'Yquem Sauternes Premier Cru (1.5L)	<i>Bordeaux</i>	4500
---	-----------------	------



HALF BOTTLES – 375ML

CHAMPAGNE AND SPARKLING HALF BOTTLE

NV Quartz Reef Methode Traditionelle*	<i>Bendigo, Central Otago</i>	65
NV Taittinger Brut Reserve	<i>Reims, France</i>	135

WHITE HALF BOTTLE

2022 Greywacke Wild Sauvignon Blanc	<i>Marlborough</i>	45
2024 Quartz Reef Pinot Gris*	<i>Bendigo, Central Otago</i>	45
2023 Quartz Reef Pinot Gris*	<i>Bendigo, Central Otago</i>	50
2022 Quartz Reef Pinot Gris*	<i>Bendigo, Central Otago</i>	55

RED HALF BOTTLE

2023 Quartz Reef Pinot Noir	<i>Bendigo, Central Otago</i>	75
2020 Quartz Reef Single Ferment Pinot Noir	<i>Bendigo, Central Otago</i>	115
2019 Quartz Reef Single Ferment Pinot Noir	<i>Bendigo, Central Otago</i>	125
2016 Quartz Reef Single Ferment Pinot Noir	<i>Bendigo, Central Otago</i>	135
2015 Quartz Reef Single Ferment Pinot Noir	<i>Bendigo, Central Otago</i>	145
2014 Quartz Reef Single Ferment Pinot Noir	<i>Bendigo, Central Otago</i>	155
2022 Valli Pinot Noir	<i>Bendigo, Central Otago</i>	115
2021 Valli Pinot Noir	<i>Bendigo, Central Otago</i>	125
2019 Valli Pinot Noir	<i>Bendigo, Central Otago</i>	135
2022 Valli Pinot Noir	<i>Bannockburn, Central Otago</i>	115
2019 Valli Pinot Noir	<i>Bannockburn, Central Otago</i>	135
2022 Valli Pinot Noir	<i>Gibbston, Central Otago</i>	115
2022 Valli Pinot Noir	<i>Waitaki, North Otago</i>	115
2020 Valli Pinot Noir	<i>Waitaki, North Otago</i>	125



SPARKLING WINE

NV Quartz Reef Methode Traditionelle*	<i>Bendigo, Central Otago</i>	95
NV Quartz Reef Rosé Methode Traditionelle*	<i>Bendigo, Central Otago</i>	105
2019 Quartz Reef Blanc de Blancs*	<i>Bendigo, Central Otago</i>	175
2017 Quartz Reef Blanc de Blancs*	<i>Bendigo, Central Otago</i>	195
2023 Ata Rangī Brut Rose	<i>Martinborough</i>	120

CHAMPAGNE

NV Billecart-Salmon Brut	<i>Épernay, France</i>	295
NV Billecart Blanc de Blanc	<i>Épernay, France</i>	435
NV Egly-Ouriet Brut Les Vignes de Vrigny 1er Cru	<i>Reims, France</i>	365
NV Egly-Ouriet Brut Grand Cru	<i>Reims, France</i>	485
NV Taittinger Brut Reserve	<i>Reims, France</i>	205
NV Taittinger Les Folies de la Marquetterie	<i>Reims, France</i>	315
NV Krug Edition 170	<i>Reims, France</i>	1145
NV Krug Edition 169	<i>Reims, France</i>	1195

CHAMPAGNE - VINTAGE

2012 Dom Perignon	<i>Épernay, France</i>	695
2015 Taittinger Brut Reserve	<i>Reims, France</i>	355
2014 Taittinger Brut Reserve	<i>Reims, France</i>	365
2012 Veuve Clicquot Grande Dame	<i>Reims, France</i>	1095

CHAMPAGNE - ROSE

NV Billecart Rose	<i>Épernay, France</i>	315
NV Egly-Ouriet Brut Rosé Grand Cru	<i>Reims, France</i>	565
NV Taittinger Cuvée Prestige Rosé	<i>Reims, France</i>	235
2005 Taittinger Comtes de Champagne	<i>Reims, France</i>	945
NV Krug Rosé	<i>Reims, France</i>	1195



NEW ZEALAND ROSE

2024 Wanaka Village Rosé*	<i>Wanaka, Central Otago</i>	85
2025 Quartz Reef	<i>Bendigo, Central Otago</i>	85
2023 Surveyor Thompson	<i>Lowburn, Central Otago</i>	85

NEW ZEALAND SAUVIGNON BLANC

2023 Coal Pit	<i>Gibbston, Central Otago</i>	105
2024 Misha's Starlet	<i>Bendigo, Central Otago</i>	85
2022 Rippon*	<i>Wanaka, Central Otago</i>	95
2024 Cloudy Bay	<i>Marlborough</i>	135
2024 Dog Point	<i>Marlborough</i>	85
2013 Foxes Island La Lapine	<i>Marlborough</i>	115
2025 Greywacke	<i>Marlborough</i>	75
2023 Greywacke Wild Sauvignon Blanc	<i>Marlborough</i>	95
2022 Smith & Sheth CRU Wairau	<i>Marlborough</i>	75
2019 Villa Maria Taylor's Pass Vineyard	<i>Marlborough</i>	90
2019 Villa Maria Southern Clays	<i>Marlborough</i>	85



NEW ZEALAND CHARDONNAY

2023 Folding Hill	<i>Bendigo, Central Otago</i>	85
2024 Quartz Reef*	<i>Bendigo, Central Otago</i>	95
2022 Quartz Reef*	<i>Bendigo, Central Otago</i>	95
2020 Quartz Reef*	<i>Bendigo, Central Otago</i>	105
2022 Prophet's Rock Cuvee aux Antipodes Blanc	<i>Bendigo, Central Otago</i>	225
2020 Prophet's Rock Cuvee aux Antipodes Blanc	<i>Bendigo, Central Otago</i>	215
2018 Prophet's Rock Cuvee aux Antipodes Blanc	<i>Bendigo, Central Otago</i>	395
2023 Domaine Thomson Clutha Left Bank	<i>Lowburn, Central Otago</i>	85
2022 Domaine Thomson Clutha Left Bank	<i>Lowburn, Central Otago</i>	95
2024 Felton Road*	<i>Bannockburn, Central Otago</i>	135
2023 Felton Road*	<i>Bannockburn, Central Otago</i>	125
2017 Felton Road*	<i>Bannockburn, Central Otago</i>	145
2016 Felton Road*	<i>Bannockburn, Central Otago</i>	135
2015 Felton Road*	<i>Bannockburn, Central Otago</i>	175
2023 Felton Road Block 6*	<i>Bannockburn, Central Otago</i>	155
2018 Felton Road Block 6*	<i>Bannockburn, Central Otago</i>	185
2017 Felton Road Block 6*	<i>Bannockburn, Central Otago</i>	195
2016 Felton Road Block 6*	<i>Bannockburn, Central Otago</i>	205
2023 Felton Road Block 2*	<i>Bannockburn, Central Otago</i>	165
2021 Felton Road Block 2*	<i>Bannockburn, Central Otago</i>	175
2018 Felton Road Block 2*	<i>Bannockburn, Central Otago</i>	175
2016 Felton Road Block 2*	<i>Bannockburn, Central Otago</i>	215
2015 Felton Road Block 2*	<i>Bannockburn, Central Otago</i>	225
2009 Carrick*	<i>Bannockburn, Central Otago</i>	165
2007 Carrick*	<i>Bannockburn, Central Otago</i>	165
2006 Carrick*	<i>Bannockburn, Central Otago</i>	165
2023 Valli Mawson	<i>Pisa, Central Otago</i>	185
2022 Te Kano Land	<i>Waitaki, North Otago</i>	125
2023 Valli	<i>Waitaki, North Otago</i>	185
2022 Valli	<i>Waitaki, North Otago</i>	175
2021 Valli	<i>Waitaki, North Otago</i>	185
2021 Bell Hill	<i>North Canterbury</i>	495
2020 Bell Hill	<i>North Canterbury</i>	435
2019 Bell Hill	<i>North Canterbury</i>	455
2013 Bell Hill	<i>North Canterbury</i>	495
2012 Bell Hill	<i>North Canterbury</i>	495
2011 Bell Hill	<i>North Canterbury</i>	495
2022 Pyramid Valley Lions Tooth	<i>North Canterbury</i>	265



CHARDONNAY CONTINUED

2019 Pegasus Bay	<i>Waipara</i>	125
2018 Pegasus Bay	<i>Waipara</i>	135
2017 Pegasus Bay	<i>Waipara</i>	145
2016 Pegasus Bay	<i>Waipara</i>	155
2015 Pegasus Bay	<i>Waipara</i>	165
2013 Pegasus Bay	<i>Waipara</i>	185
2019 Pegasus Bay Virtuoso	<i>Waipara</i>	155
2015 Pegasus Bay Virtuoso	<i>Waipara</i>	155
2020 Black Estate Home	<i>Waipara</i>	145
2015 Mountford Estate	<i>Waipara</i>	135
2014 Mountford Estate	<i>Waipara</i>	145
2010 Mountford Estate	<i>Waipara</i>	175
2024 Neudorf Rosie's Block Amphora*	<i>Nelson</i>	135
2023 Neudorf Rosie's Block Amphora*	<i>Nelson</i>	120
2024 Neudorf Rosie's Block Moutere*	<i>Nelson</i>	135
2023 Neudorf Rosie's Block Moutere*	<i>Nelson</i>	295
2021 Neudorf Rosie's Block Moutere*	<i>Nelson</i>	125
2020 Neudorf Rosie's Block Moutere*	<i>Nelson</i>	135
2019 Neudorf Rosie's Block Moutere*	<i>Nelson</i>	145
2019 Neudorf Twenty-Five Rows*	<i>Nelson</i>	105
2024 Neudorf Home Block Moutere*	<i>Nelson</i>	240
2023 Neudorf Home Block Moutere*	<i>Nelson</i>	255
2022 Neudorf Home Block Moutere*	<i>Nelson</i>	265
2020 Neudorf Home Block Moutere*	<i>Nelson</i>	265
2019 Neudorf Home Block Moutere*	<i>Nelson</i>	275
2013 Neudorf Moutere*	<i>Nelson</i>	285
2011 Fromm Clayvin Vineyard*	<i>Marlborough</i>	185
2019 Villa Maria Taylors Pass Vineyard*	<i>Marlborough</i>	85
2017 Villa Maria Taylors Pass Vineyard	<i>Marlborough</i>	95
2011 Villa Maria Taylors Pass Vineyard	<i>Marlborough</i>	165
2007 Villa Maria Taylors Pass Vineyard	<i>Marlborough</i>	185
2010 Villa Maria Keltern Vineyard	<i>Marlborough</i>	180
2009 Villa Maria Keltern Vineyard	<i>Marlborough</i>	195
2022 Greywacke	<i>Marlborough</i>	95
2019 Greywacke	<i>Marlborough</i>	115
2016 Greywacke Archive Release	<i>Marlborough</i>	110
2016 Foxes Island	<i>Marlborough</i>	125
2023 Dog Point	<i>Marlborough</i>	115
2021 Hans Herzog*	<i>Marlborough</i>	150
2020 Hans Herzog*	<i>Marlborough</i>	205



CHARDONNAY CONTINUED

2019 Hans Herzog*	<i>Marlborough</i>	255
2018 Hans Herzog*	<i>Marlborough</i>	305
2015 Hans Herzog*	<i>Marlborough</i>	450
2014 Hans Herzog*	<i>Marlborough</i>	510
2023 Ata Rangi Potiki	<i>Martinborough</i>	95
2024 Ata Rangi Masters	<i>Martinborough</i>	210
2022 Ata Rangi Masters	<i>Martinborough</i>	215
2021 Ata Rangi Masters	<i>Martinborough</i>	220
2013 Ata Rangi Craighall	<i>Martinborough</i>	185
2004 Ata Rangi Craighall	<i>Martinborough</i>	255
2023 Dry River	<i>Martinborough</i>	150
2018 Millton Clos de Ste. Anne*	<i>Gisborne</i>	205
2015 Millton Clos de Ste. Anne*	<i>Gisborne</i>	215
2014 Millton Clos de Ste. Anne*	<i>Gisborne</i>	225
2024 Kumeu River Estate	<i>Auckland</i>	110
2023 Kumeu River Estate	<i>Auckland</i>	105
2022 Kumeu River Estate	<i>Auckland</i>	95
2022 Kumeu River Mates	<i>Auckland</i>	215
2020 Kumeu River Mates	<i>Auckland</i>	225
2018 Kumeu River Mates	<i>Auckland</i>	235
2017 Kumeu River Mates	<i>Auckland</i>	245
2016 Kumeu River Coddington	<i>Auckland</i>	155
2024 Kumeu River Rays Road	<i>Auckland</i>	105
2014 Elephant Hill	<i>Hawkes Bay</i>	145
2013 Elephant Hill	<i>Hawkes Bay</i>	155
2016 Elephant Hill Reserve	<i>Hawkes Bay</i>	175
2013 Elephant Hill Reserve	<i>Hawkes Bay</i>	215
2020 Collaboration Aurulent	<i>Hawkes Bay</i>	95
2014 Collaboration	<i>Hawkes Bay</i>	135
2019 Esk Valley Wine Makers Reserve	<i>Hawkes Bay</i>	115
2017 Esk Valley Wine Makers Reserve	<i>Hawkes Bay</i>	135
2015 Esk Valley Wine Makers Reserve	<i>Hawkes Bay</i>	145
2018 Vidal Legacy	<i>Hawkes Bay</i>	95
2016 Vidal Legacy	<i>Hawkes Bay</i>	135
2015 Vidal Legacy	<i>Hawkes Bay</i>	155
2011 Vidal Legacy	<i>Hawkes Bay</i>	175
2010 Vidal Legacy	<i>Hawkes Bay</i>	185



CHARDONNAY CONTINUED

2018 Paritua	<i>Hawkes Bay</i>	95
2020 Bilancia Tiratore	<i>Hawkes Bay</i>	185
2018 Smith & Sheth CRU Mangatahi	<i>Hawkes Bay</i>	125
2022 Craggy Range Les Beaux Cailloux	<i>Hawkes Bay</i>	375
2022 Tony Bish Heartwood	<i>Hawkes Bay</i>	115
2018 Tony Bish Zen	<i>Hawkes Bay</i>	315
2014 Sacred Hill Virgin	<i>Hawkes Bay</i>	165
2024 Radburnd Cellars	<i>Hawkes Bay</i>	160
2021 Radburnd Cellars	<i>Hawkes Bay</i>	165
2020 Radburnd Cellars	<i>Hawkes Bay</i>	175
2019 Radburnd Cellars	<i>Hawkes Bay</i>	185
2018 Radburnd Cellars	<i>Hawkes Bay</i>	195
2019 The Landing	<i>Bay of Islands, Northland</i>	105
2004 Karikari Estate	<i>Karikari Peninsula, Northland</i>	165
2024 Man O War Valhalla	<i>Waiheke Island, Auckland</i>	115
2023 Man O War Valhalla	<i>Waiheke Island, Auckland</i>	115



NEW ZEALAND RIESLING

		Residual Sugar g/l	
2018 Felton Road*	<i>Bannockburn, Central Otago</i>	64	125
2017 Felton Road*	<i>Bannockburn, Central Otago</i>	62	135
2015 Felton Road*	<i>Bannockburn, Central Otago</i>	74	155
2024 Felton Road Dry*	<i>Bannockburn, Central Otago</i>	4	85
2020 Felton Road Dry*	<i>Bannockburn, Central Otago</i>	4	115
2024 Felton Road Block 1*	<i>Bannockburn, Central Otago</i>	57	105
2023 Felton Road Block 1*	<i>Bannockburn, Central Otago</i>	57	115
2022 Felton Road Block 1*	<i>Bannockburn, Central Otago</i>	57	125
2019 Felton Road Block 1*	<i>Bannockburn, Central Otago</i>	57	145
2016 Felton Road Block 1*	<i>Bannockburn, Central Otago</i>	66	165
2008 Felton Road Block 1*	<i>Bannockburn, Central Otago</i>	67	215
2016 Misha's Lyric	<i>Bendigo, Central Otago</i>	4.5	65
2015 Misha's Limelight	<i>Bendigo, Central Otago</i>	31	75
2023 Prophets Rock Dry	<i>Bendigo, Central Otago</i>	7	105
2019 Prophets Rock	<i>Bendigo, Central Otago</i>	7	95
2018 Prophets Rock	<i>Bendigo, Central Otago</i>	5	100
2017 Prophets Rock	<i>Bendigo, Central Otago</i>	8	105
2023 Neudorf Rosie's Block Dry	<i>Nelson</i>	4	85
2012 Valli Old Vine	<i>Alexandra, Central Otago</i>	5	95
2020 Rippon Mature Vines*	<i>Wanaka, Central Otago</i>	8.3	95
2014 Pegasus Bay	<i>Waipara</i>	25.4	95
2013 Pegasus Bay	<i>Waipara</i>	25.4	105
2011 Pegasus Bay	<i>Waipara</i>	25.4	125
2009 Pegasus Bay	<i>Waipara</i>	13	145
2019 Pegasus Bay Bel Canto	<i>Waipara</i>	5	105
2017 Pegasus Bay Bel Canto	<i>Waipara</i>	5	115
2015 Pegasus Bay Bel Canto	<i>Waipara</i>	5	125
2014 Pegasus Bay Bel Canto	<i>Waipara</i>	7	135
2016 Foxes Island	<i>Marlborough</i>	4	95
2013 Foxes Island	<i>Marlborough</i>	4	105
2021 Kusuda	<i>Martinborough</i>	3.2	115
2019 Kusuda	<i>Martinborough</i>	3.2	120
2018 Kusuda	<i>Martinborough</i>	1	125
2017 Kusuda	<i>Martinborough</i>	6.4	130
2015 Kusuda	<i>Martinborough</i>	6.8	135
2020 Dry River Craighall	<i>Martinborough</i>	11.5	115
2018 Dry River Craighall	<i>Martinborough</i>	5	125



RIESLING CONTINUED

2017 Dry River Craighall	<i>Martinborough</i>	5	130
2016 Dry River Craighall	<i>Martinborough</i>	6	135
2015 Dry River Craighall	<i>Martinborough</i>	5	140
2014 Dry River Craighall	<i>Martinborough</i>	5	145
2009 Dry River Craighall	<i>Martinborough</i>	6	175

NEW ZEALAND PINOT GRIS

2024 Quartz Reef*	<i>Bendigo, Central Otago</i>		85
2023 Quartz Reef*	<i>Bendigo, Central Otago</i>		95
2021 Quartz Reef*	<i>Bendigo, Central Otago</i>		100
2019 Quartz Reef*	<i>Bendigo, Central Otago</i>		115
2018 Quartz Reef*	<i>Bendigo, Central Otago</i>		110
2017 Quartz Reef*	<i>Bendigo, Central Otago</i>		105
2016 Quartz Reef*	<i>Bendigo, Central Otago</i>		100
2015 Quartz Reef*	<i>Bendigo, Central Otago</i>		110
2014 Quartz Reef	<i>Bendigo, Central Otago</i>		115
2022 Prophet's Rock	<i>Bendigo, Central Otago</i>		95
2018 Prophet's Rock	<i>Bendigo, Central Otago</i>		155
2017 Prophet's Rock	<i>Bendigo, Central Otago</i>		165
2024 Ata Rangī	<i>Martinborough</i>		80
2018 Dry River	<i>Martinborough</i>		145
2016 Dry River	<i>Martinborough</i>		155
2015 Dry River	<i>Martinborough</i>		160

NEW ZEALAND GEWÜRZTRAMINER

2020 Rippon	<i>Wanaka</i>		75
2017 Dry River	<i>Martinborough</i>		130
2016 Dry River	<i>Martinborough</i>		135
2009 Dry River	<i>Martinborough</i>		170

NEW ZEALAND VIOGNIER

2015 Millton Clos de Ste. Anne*	<i>Gisborne</i>		135
2016 Hans Herzog*	<i>Martinborough</i>		125



NEW ZEALAND CHENIN BLANC

2021 Millton Te Arai	<i>Gisborne</i>	85
2018 Millton Clos de Ste. Anne*	<i>Gisborne</i>	185
2014 Millton Clos de Ste. Anne*	<i>Gisborne</i>	195

NEW ZEALAND INTERESTING WHITES

2023 Quartz Reef Gruner Veltliner*	<i>Bendigo, Central Otago</i>	95
2021 Quartz Reef Gruner Veltliner*	<i>Bendigo, Central Otago</i>	95
2018 Quartz Reef Gruner Veltliner*	<i>Bendigo, Central Otago</i>	105
2017 Quartz Reef Gruner Veltliner*	<i>Bendigo, Central Otago</i>	115
2024 Akitu Pinot Blanc	<i>Wanaka, Central Otago</i>	100
2023 Akitu Pinot Blanc	<i>Wanaka, Central Otago</i>	85
2016 Nevis Bluff Pinot Blanc	<i>Pisa, Central Otago</i>	75
2013 Villa Maria Verdelho*	<i>Auckland</i>	95
2024 Neudorf Rosie's Block Moutere Albarino*	<i>Nelson</i>	85
2020 Neudorf Rosie's Block Moutere Albarino*	<i>Nelson</i>	95
2024 Smith & Sheth CRU Albarino	<i>Hawke's Bay</i>	120



AUSTRALIA - WHITE

2019 Penfolds Yattarna Bin 144 Chardonnay	<i>Adelaide Hills, S. Australia</i>	385
2013 Penfolds Yattarna Bin 144 Chardonnay	<i>Adelaide Hills, S. Australia</i>	395
2016 Giaconda Estate Vineyard Chardonnay	<i>Beechworth, Victoria</i>	335
2006 Giaconda Estate Vineyard Aeolia Roussanne	<i>Beechworth, Victoria</i>	415
2023 Yarra Yering Chardonnay	<i>Yarra Valley, Victoria</i>	245
2022 Yarra Yering Chardonnay	<i>Yarra Valley, Victoria</i>	225
2022 Grosset Polish Hill Riesling	<i>Clare Valley, S. Australia</i>	175
2017 Tempus Two Chardonnay	<i>Hunter Valley, New South Wales</i>	95
2013 Leeuwin Art Series Riesling	<i>Margaret River, W. Australia</i>	125
2022 Leeuwin Art Series Chardonnay	<i>Margaret River, W. Australia</i>	425
2021 Leeuwin Art Series Chardonnay	<i>Margaret River, W. Australia</i>	405
2016 Leeuwin Art Series Chardonnay	<i>Margaret River, W. Australia</i>	345
2015 Leeuwin Art Series Chardonnay	<i>Margaret River, W. Australia</i>	355
2012 Leeuwin Art Series Chardonnay	<i>Margaret River, W. Australia</i>	365
2015 Ten Minutes by Tractor Wallis Chardonnay	<i>Mornington Peninsula</i>	295
2024 Tolpuddle Chardonnay	<i>Coal River Valley, Tasmania</i>	245

SOUTH AFRICA – WHITE

2016 Boekenhoutskloof Semillon	<i>Franschhoek Valley</i>	145
2019 AA Badenhorst Golden Slopes Chenin Blanc	<i>Swartland</i>	175
2020 Hamilton Russell Chardonnay	<i>Hemel-en-Aarde Valley</i>	185
2020 The Sadie Family Skurfberg Chenin Blanc	<i>Citrusdal Mountain</i>	185

USA – WHITE

2022 Duckhorn Vineyards Napa Valley Chardonnay	<i>Napa Valley</i>	155
2018 Stags' Leap Karia Chardonnay	<i>Napa Valley</i>	155

ITALY – WHITE

2019 Antinori Bramito del Cervo Chardonnay	<i>Umbria</i>	95
--	---------------	----

ARGENTINA – WHITE

2014 Catena Zapata Adriana White Stones Chardonnay	<i>Mendoza</i>	245
--	----------------	-----

JAPAN – WHITE

NV Kikuka Chardonnay	<i>Kumamoto</i>	265
2018 Kikuka Barrel Aged Chardonnay	<i>Kumamoto</i>	315



FRANCE – WHITE BURGUNDY

2018 Dom. William Fèvre Chablis 1er Cru 'Montée Tonnerre'	<i>Chablis</i>	375
2021 Dom. William Fèvre Bougros Côte Bouguer	<i>Chablis</i>	435
2020 Dom. William Fèvre Bougros Côte Bouguer	<i>Chablis</i>	455
2007 Dom. Billaud Simon Vaudésir Grand Cru	<i>Chablis</i>	525
2022 Dom. William Fèvre Chablis Grand Cru 'Les Clos'	<i>Chablis</i>	595
2021 Dom. William Fèvre Chablis Grand Cru 'Les Clos'	<i>Chablis</i>	545
2020 Dom. William Fèvre Chablis Grand Cru 'Les Clos'	<i>Chablis</i>	595
2019 Dom. William Fèvre Chablis Grand Cru 'Les Clos'	<i>Chablis</i>	645
2018 Dom. William Fèvre Chablis Grand Cru 'Les Clos'	<i>Chablis</i>	695
2012 Dom. William Fèvre Chablis Grand Cru 'Les Clos'	<i>Chablis</i>	1150
2011 Rene et Vincent Dauvissat Chablis Grand Cru 'Les Preuses'	<i>Chablis</i>	1950
2022 Faiveley Meursault	<i>Côte de Beaune</i>	335
2016 Dom. Francis Lechaue Meursault 'L'Éveil des Sens'	<i>Côte de Beaune</i>	355
2023 Chanson Chassagne-Montrachet 1er Cru 'Les Chenevottes'	<i>Côte de Beaune</i>	600
2022 Chanson Chassagne-Montrachet 1er Cru 'Les Chenevottes'	<i>Côte de Beaune</i>	615
2021 Chanson Chassagne-Montrachet 1er Cru 'Les Chenevottes'	<i>Côte de Beaune</i>	625
2019 Chanson Chassagne-Montrachet 1er Cru 'Les Chenevottes'	<i>Côte de Beaune</i>	675
2018 Chanson Chassagne-Montrachet 1er Cru 'Les Chenevottes'	<i>Côte de Beaune</i>	695
2020 Dom. Thomson Saint-Aubin 'Les Travers de Chez Eduard'	<i>Côte de Beaune</i>	295
2015 Dom. Leflaive Puligny-Montrachet Pouilly-Fuissé	<i>Côte de Beaune</i>	365
2011 Jacques Carillon Puligny Montrachet 1er Cru 'Les Champs Canet'	<i>Côte de Beaune</i>	950
2010 Vincent Girardin Puligny Montrachet Vieilles Vignes	<i>Côte de Beaune</i>	525
2016 Joseph Faiveley Puligny Montrachet 1er Cru 'Les Folatières'	<i>Côte de Beaune</i>	625
2022 Joseph Faiveley Puligny Montrachet	<i>Côte de Beaune</i>	495
2022 Dom. Faiveley Puligny Montrachet 1 ^{er} Cru 'Champ Gain'	<i>Côte de Beaune</i>	595
2016 Dom. Faiveley Corton Charlemagne Grand Cru	<i>Côte de Beaune</i>	1150
2011 Dom. Montille Corton-Charlemagne Grand Cru	<i>Côte de Beaune</i>	1125
2015 Dom. Leflaive Puligny-Montrachet 1er Cru 'Clavoillon'*	<i>Côte de Beaune</i>	2250
2013 Dom. Leflaive Puligny-Montrachet 1er Cru 'Les Folatières'*	<i>Côte de Beaune</i>	2750
2012 Dom. Leflaive Puligny-Montrachet 1er Cru 'Les Folatières'*	<i>Côte de Beaune</i>	2950
2015 Dom. Leflaive Puligny-Montrachet 1er Cru 'Les Combettes'*	<i>Côte de Beaune</i>	3250
2007 Château De Puligny-Montrachet Chevalier-Montrachet Grand Cru	<i>Côte de Beaune</i>	1445
2013 Dom. Leflaive Batard-Montrachet Grand Cru*	<i>Côte de Beaune</i>	8250
2015 Dom. Leflaive Puligny-Montrachet 1er Cru 'Les Pucelles'*	<i>Côte de Beaune</i>	3250
2013 Dom. Leflaive Puligny-Montrachet 1er Cru 'Les Pucelles'*	<i>Côte de Beaune</i>	3750
2012 Dom. Leflaive Puligny-Montrachet 1er Cru 'Les Pucelles'*	<i>Côte de Beaune</i>	3950
2015 Dom. Leflaive Chevalier-Montrachet Grand Cru*	<i>Côte de Beaune</i>	7950
2013 Dom. Leflaive Chevalier-Montrachet Grand Cru*	<i>Côte de Beaune</i>	6950
2009 Dom. Leflaive Chevalier-Montrachet Grand Cru*	<i>Côte de Beaune</i>	8250



FRANCE – OTHERS

2017 Château d'Yquem Sauternes 'Y' Ygrec	<i>Bordeaux</i>	975
<i>The Y Ygrec is an exceptionally rare and prestigious dry white wine from the iconic Château d'Yquem in Bordeaux. Crafted in tiny quantities from the estate's legendary terroir using Sauvignon Blanc and Semillon, it shows refined citrus, pear and floral notes with a rich, mineral finish – making it highly collectible and truly special.</i>		
2013 Guigal Condrieu La Dorianne	<i>Rhône</i>	525
1990 Marc Brédif Vouvray Grande Année	<i>Loire</i>	450
1989 Marc Brédif Vouvray Grande Année	<i>Loire</i>	475



NEW ZEALAND PINOT NOIR

2023 Tinwald Farm	<i>Wanaka, Central Otago</i>	85
2022 Akitu A1	<i>Wanaka, Central Otago</i>	150
2018 Akitu A1	<i>Wanaka, Central Otago</i>	165
2021 Chard Farm 'The Tiger'	<i>Lowburn, Central Otago</i>	195
2019 Mt Edward Morrison*	<i>Lowburn, Central Otago</i>	185
2024 Maude	<i>Lowburn, Central Otago</i>	105
2017 Domaine Thomson Surveyor Thomson	<i>Lowburn, Central Otago</i>	155
2022 Valli	<i>Waitaki, North Otago</i>	195
2020 Valli	<i>Waitaki, North Otago</i>	185
2022 Te Kano Land	<i>Waitaki, North Otago</i>	145
2021 Kahiwi Scordatura Hexa	<i>Pisa, Central Otago</i>	105
2021 Kahiwi Scordatura Tetra	<i>Pisa, Central Otago</i>	110
2021 Kahiwi Stella	<i>Pisa, Central Otago</i>	205
2023 Valli	<i>Gibbston, Central Otago</i>	180
2020 Valli	<i>Gibbston, Central Otago</i>	215
2023 Valli	<i>Bendigo, Central Otago</i>	180
2022 Valli	<i>Bendigo, Central Otago</i>	190
2020 Valli	<i>Bendigo, Central Otago</i>	215
2020 Folding Hill Orchard Block	<i>Bendigo, Central Otago</i>	145
2022 Quartz Reef*	<i>Bendigo, Central Otago</i>	130
2019 Quartz Reef*	<i>Bendigo, Central Otago</i>	145
2018 Quartz Reef*	<i>Bendigo, Central Otago</i>	140
2017 Quartz Reef Bendigo Limited Edition*	<i>Bendigo, Central Otago</i>	165
2016 Quartz Reef*	<i>Bendigo, Central Otago</i>	175
2015 Quartz Reef*	<i>Bendigo, Central Otago</i>	185
2013 Quartz Reef*	<i>Bendigo, Central Otago</i>	195
2020 Quartz Reef Single Ferment*	<i>Bendigo, Central Otago</i>	220
2018 Quartz Reef Single Ferment*	<i>Bendigo, Central Otago</i>	195
2016 Quartz Reef Single Ferment*	<i>Bendigo, Central Otago</i>	215
2015 Quartz Reef Single Ferment*	<i>Bendigo, Central Otago</i>	225
2014 Quartz Reef Single Ferment*	<i>Bendigo, Central Otago</i>	235
2013 Quartz Reef Single Ferment*	<i>Bendigo, Central Otago</i>	265
2014 Crown Range Cellars China Girl	<i>Bendigo, Central Otago</i>	175
2023 Prophet's Home Vineyard Antipodes	<i>Bendigo, Central Otago</i>	190



PINOT NOIR CONTINUED

2021 Prophet's Rock Cuvee aux Antipodes	<i>Bendigo, Central Otago</i>	250
2020 Prophet's Rock Cuvee aux Antipodes	<i>Bendigo, Central Otago</i>	255
2015 Prophet's Rock Cuvee aux Antipodes	<i>Bendigo, Central Otago</i>	420
2013 Prophet's Rock	<i>Bendigo, Central Otago</i>	420
2016 Misha's Vineyard Verismo	<i>Bendigo, Central Otago</i>	195
2013 Misha's Vineyard Verismo	<i>Bendigo, Central Otago</i>	215
2012 Misha's Vineyard Verismo	<i>Bendigo, Central Otago</i>	235
2011 Pyramid Valley Calvert	<i>Bannockburn, Central Otago</i>	265
2022 Burn Cottage	<i>Bannockburn, Central Otago</i>	180
2024 Felton Road Bannockburn	<i>Bannockburn, Central Otago</i>	165
2020 Felton Road Calvert*	<i>Bannockburn, Central Otago</i>	225
2014 Felton Road Calvert*	<i>Bannockburn, Central Otago</i>	265
2024 Felton Road Cornish Point*	<i>Bannockburn, Central Otago</i>	200
2022 Felton Road Cornish Point*	<i>Bannockburn, Central Otago</i>	205
2021 Felton Road Cornish Point*	<i>Bannockburn, Central Otago</i>	215
2020 Felton Road Cornish Point*	<i>Bannockburn, Central Otago</i>	225
2016 Felton Road Cornish Point*	<i>Bannockburn, Central Otago</i>	220
2024 Felton Road MacMuir*	<i>Bannockburn, Central Otago</i>	225
2023 Felton Road MacMuir*	<i>Bannockburn, Central Otago</i>	235
2023 Felton Road Block 5*	<i>Bannockburn, Central Otago</i>	265
2022 Felton Road Block 5*	<i>Bannockburn, Central Otago</i>	275
2019 Felton Road Block 5*	<i>Bannockburn, Central Otago</i>	295
2024 Felton Road Block 3*	<i>Bannockburn, Central Otago</i>	255
2023 Felton Road Block 3*	<i>Bannockburn, Central Otago</i>	265
2022 Felton Road Block 3*	<i>Bannockburn, Central Otago</i>	275
2019 Felton Road Block 3*	<i>Bannockburn, Central Otago</i>	295
2018 Felton Road Block 3*	<i>Bannockburn, Central Otago</i>	300
2017 Felton Road Block 3*	<i>Bannockburn, Central Otago</i>	325
2019 Mt Edward Muirkirk*	<i>Bannockburn, Central Otago</i>	185
2023 Valli	<i>Bannockburn, Central Otago</i>	165
2016 Cloudy Bay Te Wahi	<i>Bannockburn/Northburn, Central Otago</i>	285
2006 Coal Pit	<i>Gibbston, Central Otago</i>	335
2016 Crown Range Cellars Signature Selection	<i>Gibbston, Central Otago</i>	325
2015 Crown Range Cellars Signature Selection	<i>Gibbston, Central Otago</i>	335
2013 Rockburn	<i>Gibbston, Central Otago</i>	165
2020 Rippon Mature Vines*	<i>Wanaka, Central Otago</i>	155
2015 Rippon Mature Vines*	<i>Wanaka, Central Otago</i>	225
2012 Rippon Mature Vines*	<i>Wanaka, Central Otago</i>	245



PINOT NOIR CONTINUED

2020 Pyramid Valley Earth Smoke*	<i>North Canterbury</i>	255
2016 Pyramid Valley Earth Smoke*	<i>North Canterbury</i>	275
2020 Pyramid Valley Angel Flower*	<i>North Canterbury</i>	255
2021 Bell Hill*	<i>North Canterbury</i>	495
2020 Bell Hill*	<i>North Canterbury</i>	435
2019 Bell Hill*	<i>North Canterbury</i>	455
2018 Bell Hill*	<i>North Canterbury</i>	475
2016 Bell Hill*	<i>North Canterbury</i>	495
2020 Bell Hill Old Weka Pass*	<i>North Canterbury</i>	265
2019 Bell Hill Old Weka Pass*	<i>North Canterbury</i>	285
2018 Bell Hill Old Weka Pass*	<i>North Canterbury</i>	315
2014 Bell Hill Old Weka Pass*	<i>North Canterbury</i>	345
2012 Bell Hill Old Weka Pass*	<i>North Canterbury</i>	385
2010 Mon Cheval Le Char	<i>Waipara</i>	175
2011 Mountford Estate	<i>Waipara</i>	165
2010 Mountford Estate 'The Gradient'	<i>Waipara</i>	165
2019 Pegasus Bay	<i>Waipara</i>	165
2017 Pegasus Bay	<i>Waipara</i>	185
2016 Pegasus Bay	<i>Waipara</i>	195
2014 Pegasus Bay	<i>Waipara</i>	205
2013 Pegasus Bay	<i>Waipara</i>	215
2012 Pegasus Bay	<i>Waipara</i>	225
2011 Pegasus Bay	<i>Waipara</i>	235
2019 Pegasus Bay Prima Donna	<i>Waipara</i>	275
2017 Pegasus Bay Prima Donna	<i>Waipara</i>	305
2016 Pegasus Bay Prima Donna	<i>Waipara</i>	315
2013 Pegasus Bay Prima Donna	<i>Waipara</i>	335
2012 Pegasus Bay Prima Donna	<i>Waipara</i>	345
2011 Pegasus Bay Prima Donna	<i>Waipara</i>	355
2021 Cloudy Bay	<i>Marlborough</i>	155
2020 Cloudy Bay	<i>Marlborough</i>	165
2012 Foxes Island Le Renard	<i>Marlborough</i>	210
2012 Villa Maria Taylor's Pass	<i>Marlborough</i>	175
2021 Fromm Clayvin Vineyard*	<i>Marlborough</i>	175
2014 Fromm Fromm Vineyard*	<i>Marlborough</i>	185
2011 Fromm Fromm Vineyard*	<i>Marlborough</i>	195
2014 Clos Marguerite	<i>Marlborough</i>	255
2011 Hans Herzog *	<i>Marlborough</i>	185
2013 Hans Herzog 'Grand Duc'*	<i>Marlborough</i>	265



PINOT NOIR CONTINUED

2022 Ata Rangi	<i>Martinborough</i>	225
2021 Ata Rangi	<i>Martinborough</i>	205
2020 Ata Rangi	<i>Martinborough</i>	215
2019 Ata Rangi	<i>Martinborough</i>	225
2016 Ata Rangi	<i>Martinborough</i>	235
2011 Ata Rangi	<i>Martinborough</i>	275
2020 Ata Rangi McCrone Vineyard	<i>Martinborough</i>	315
2020 Escarpment Kupe	<i>Martinborough</i>	245
2016 Escarpment Kupe	<i>Martinborough</i>	285
2014 Escarpment Kupe	<i>Martinborough</i>	295
2023 Dry River	<i>Martinborough</i>	250
2020 Dry River	<i>Martinborough</i>	235
2019 Dry River	<i>Martinborough</i>	245
2016 Dry River	<i>Martinborough</i>	265
2018 Kusuda	<i>Martinborough</i>	345
2017 Kusuda	<i>Martinborough</i>	355
2024 Craggy Range Te Muna Road	<i>Martinborough</i>	175
2022 Craggy Range Aroha	<i>Martinborough</i>	315
2015 Craggy Range Aroha	<i>Martinborough</i>	345
2014 Millton Clos de Ste. Anne*	<i>Gisborne</i>	145
2021 Neudorf Moutere*	<i>Nelson</i>	165
2017 Neudorf Moutere*	<i>Nelson</i>	185
2015 Neudorf Moutere*	<i>Nelson</i>	205
2014 Neudorf Moutere*	<i>Nelson</i>	215
2012 Neudorf Moutere*	<i>Nelson</i>	225
2010 Neudorf Moutere*	<i>Nelson</i>	235
2009 Neudorf Moutere*	<i>Nelson</i>	245



NEW ZEALAND SYRAH

2023 Aurora Legacy	<i>Central Otago</i>	75
2022 Aurora Legacy	<i>Central Otago</i>	85
2021 Fromm	<i>Marlborough</i>	125
2019 Millton Clos de Ste. Anne*	<i>Gisborne</i>	195
2015 Millton Clos de Ste. Anne*	<i>Gisborne</i>	225
2014 Millton Clos de Ste. Anne*	<i>Gisborne</i>	235
2024 Bilancia Hawkes Bay	<i>Hawkes Bay</i>	95
2019 Bilancia La Collina	<i>Hawkes Bay</i>	305
2009 Bilancia La Collina	<i>Hawkes Bay</i>	435
2022 Craggy Range Le Sol	<i>Hawkes Bay</i>	305
2019 Craggy Range Le Sol	<i>Hawkes Bay</i>	315
2016 Craggy Range Le Sol	<i>Hawkes Bay</i>	335
2015 Craggy Range Le Sol	<i>Hawkes Bay</i>	345
2011 Craggy Range Le Sol	<i>Hawkes Bay</i>	365
2024 Paritua	<i>Hawkes Bay</i>	95
2021 Radburnd Cellars	<i>Hawkes Bay</i>	185
2020 Radburnd Cellars	<i>Hawkes Bay</i>	195
2019 Radburnd Cellars	<i>Hawkes Bay</i>	205
2016 Sacred Hill Deerstalkers	<i>Hawkes Bay</i>	175
2023 Te Mata Bullnose	<i>Hawkes Bay</i>	225
2021 Te Mata Bullnose	<i>Hawkes Bay</i>	175
2020 Te Mata Bullnose	<i>Hawkes Bay</i>	185
2014 Trinity Hill Homage	<i>Hawkes Bay</i>	275
2018 Dry River Lovat	<i>Martinborough</i>	195
2015 Dry River Lovat	<i>Martinborough</i>	215
2013 Dry River Lovat	<i>Martinborough</i>	235
2008 Dry River Lovat	<i>Martinborough</i>	285
2024 Ata Rangi Juliet	<i>Martinborough</i>	215
2015 Ata Rangi Juliet	<i>Martinborough</i>	295
2021 Kusuda	<i>Martinborough</i>	275
2019 Kusuda	<i>Martinborough</i>	295
2018 Kusuda	<i>Martinborough</i>	305
2017 Kusuda	<i>Martinborough</i>	315
2016 Kusuda	<i>Martinborough</i>	325
2023 Man O War Dreadnought	<i>Waiheke Island</i>	135
2010 Te Rere Estate	<i>Waiheke Island</i>	185
2008 Hay Paddock	<i>Waiheke Island</i>	255
2019 Karikari Estate	<i>Karikari Peninsula, Northland</i>	115



NEW ZEALAND MERLOT / CABERNET & BLENDS

2022 Craggy Range Sophia	<i>Gimblett Gravels, Hawkes Bay</i>	285
2016 Craggy Range Sophia	<i>Gimblett Gravels, Hawkes Bay</i>	315
2015 Craggy Range	<i>Gimblett Gravels, Hawkes Bay</i>	325
2006 Villa Maria Omahu Merlot	<i>Gimblett Gravels, Hawkes Bay</i>	245
2021 Paritua 2112	<i>Gimblett Gravels, Hawkes Bay</i>	275
2019 Paritua 2112	<i>Gimblett Gravels, Hawkes Bay</i>	285
2018 Paritua 2112	<i>Gimblett Gravels, Hawkes Bay</i>	295
2024 Man O War Ironclad Cabernet Franc/Merlot & Petit Verdot	<i>Waiheke Island</i>	140
2023 Te Mata Awatea	<i>Hawkes Bay</i>	115
2022 Te Mata Awatea	<i>Hawkes Bay</i>	125
2024 Te Mata Coleraine	<i>Hawkes Bay</i>	410
2023 Te Mata Coleraine	<i>Hawkes Bay</i>	415
2022 Te Mata Coleraine	<i>Hawkes Bay</i>	420
2021 Te Mata Coleraine	<i>Hawkes Bay</i>	425
2020 Te Mata Coleraine	<i>Hawkes Bay</i>	430
2019 Te Mata Coleraine	<i>Hawkes Bay</i>	435
2018 Te Mata Coleraine	<i>Hawkes Bay</i>	440
2017 Te Mata Coleraine	<i>Hawkes Bay</i>	445
2015 Te Mata Coleraine	<i>Hawkes Bay</i>	455
2014 Te Mata Coleraine	<i>Hawkes Bay</i>	460
2013 Te Mata Coleraine	<i>Hawkes Bay</i>	465
2011 Te Mata Coleraine	<i>Hawkes Bay</i>	470
2002 Esk Valley Merlot/Malbec/Cabernet Sauvignon	<i>Hawkes Bay</i>	295
2016 Esk Valley The Terraces	<i>Hawkes Bay</i>	345
2004 Esk Valley The Terraces	<i>Hawkes Bay</i>	415
1995 Esk Valley The Terraces	<i>Hawkes Bay</i>	475
2021 Radburnd Cellars	<i>Hawkes Bay</i>	185
2020 Radburnd Cellars	<i>Hawkes Bay</i>	185
2019 Radburnd Cellars	<i>Hawkes Bay</i>	190
2018 Radburnd Cellars	<i>Hawkes Bay</i>	195
2019 Vidal Reserve	<i>Hawkes Bay</i>	90
2017 Hans Herzog* Library Spirit of Marlborough	<i>Marlborough</i>	180
2016 Hans Herzog* Library Spirit of Marlborough	<i>Marlborough</i>	220
2015 Hans Herzog* Library Spirit of Marlborough	<i>Marlborough</i>	275
2014 Hans Herzog* Library Spirit of Marlborough	<i>Marlborough</i>	310
2013 Hans Herzog* Library Spirit of Marlborough	<i>Marlborough</i>	350
2012 Hans Herzog* Library Spirit of Marlborough	<i>Marlborough</i>	400



MERLOT / CABERNET & BLENDS CONTINUED

2008 Destiny Bay Destinae Cab Merlot Malbec Petit Verdot	<i>Waiheke Island</i>	395
2010 Destiny Bay Mystae Cab Merlot Malbec Petit Verdot	<i>Waiheke Island</i>	595
2009 Destiny Bay Magna Praemia Cab Merlot Malbec	<i>Waiheke Island</i>	1125
2016 Stonyridge Larose Cab Merlot Malbec Petit Verdot	<i>Waiheke Island</i>	575
2015 Stonyridge Larose Cab Merlot Malbec Petit Verdot	<i>Waiheke Island</i>	825
2014 Stonyridge Larose Cab Merlot Malbec Petit Verdot	<i>Waiheke Island</i>	825
2012 Stonyridge Larose Cab Merlot Malbec Petit Verdot	<i>Waiheke Island</i>	845
2011 Stonyridge Larose Cab Merlot Malbec Petit Verdot	<i>Waiheke Island</i>	845
2010 Stonyridge Larose Cab Merlot Malbec Petit Verdot	<i>Waiheke Island</i>	825
2009 Stonyridge Larose Cab Merlot Malbec Petit Verdot	<i>Waiheke Island</i>	835
2007 Stonyridge Larose Cab Merlot Malbec Petit Verdot	<i>Waiheke Island</i>	795
2006 Stonyridge Larose Cab Merlot Malbec Petit Verdot	<i>Waiheke Island</i>	995
2005 Stonyridge Larose Cab Merlot Malbec Petit Verdot	<i>Waiheke Island</i>	895
2004 Stonyridge Larose Cab Merlot Malbec Petit Verdot	<i>Waiheke Island</i>	925
2002 Stonyridge Larose Cab Merlot Malbec Petit Verdot	<i>Waiheke Island</i>	995
2000 Stonyridge Larose Cab Merlot Malbec Petit Verdot	<i>Waiheke Island</i>	1050
2009 St Nesbit Cabernet Franc Merlot Petit Verdot	<i>Auckland</i>	285
2010 Puriri Hills Reserve Merlot Cabernet Franc	<i>Auckland</i>	365
2015 Puriri Hills Pope Merlot Cabernet Franc	<i>Auckland</i>	415

NEW ZEALAND CABERNET SAUVIGNON

2021 Paritua Single Vinyard	<i>Hawkes Bay</i>	125
1970 Nobilos Collectors Cabernet Sauvignon (<i>recorked</i>)	<i>Auckland</i>	850

NEW ZEALAND INTERESTING REDS

2020 Pegasus Bay Maestro Malbec	<i>Waipara</i>	165
2021 Poderi Crisci Montepulciano	<i>Waiheke Island</i>	120
2019 Poderi Crisci Nebbiolo	<i>Waiheke Island</i>	220
2020 The Landing Sangiovese	<i>Bay of Islands, Northland</i>	145
2018 Hans Herzog* Nebbiolo	<i>Marlborough</i>	305
2014 Hans Herzog* Nebbiolo	<i>Marlborough</i>	620
2020 Hans Herzog* Montepulciano	<i>Marlborough</i>	175
2019 Hans Herzog* Montepulciano	<i>Marlborough</i>	220
2018 Hans Herzog* Montepulciano	<i>Marlborough</i>	235
2016 Hans Herzog* Montepulciano	<i>Marlborough</i>	355
2014 Hans Herzog* Montepulciano	<i>Marlborough</i>	420



INTERESTING RED CONTINUED

2021 Heron's Flight Dolcetto	<i>Matakana</i>	75
2019 Heron's Flight Amphora Sangiovese	<i>Matakana</i>	255
2009 Stonyridge Luna Negra Malbec	<i>Waiheke Island</i>	375
2008 Stonyridge Luna Negra Malbec	<i>Waiheke Island</i>	385

SOUTH AFRICA – RED

2017 Columella Vindemia

Swartland

465

SOUTH AFRICA - WINE PRODUCTION

South Africa is hot and dry, and if it wasn't for the cooling influence of the Benguela Ocean Current sedon from the Antarctic, the 'Cape Doctor' – a cool south-easterly wind which flows up through Cape Town, and several mountainous regions, the country would be completely inhospitable to viticulture.

The country is most famous for its acidic Chenin Blanc which displays a full spectrum of fruit flavours from apple to apricot to pineapple and guava. However due to the variety of microclimates, other classical white varietals such as Semillon and Chardonnay do very well too. South Africa's flagship red varietal is Pinotage, which originated from a cross between Pinot Noir and Cinsault. They display dark fruit, a full body and low acidity, making it very easy to drink. Cabernet Sauvignon is also produced in abundance due to the hot climate.

The most prestigious and well-known region is Stellenbosch, which sits in a prime location on the coast, in the path of the Cape Doctor. It also has several mountainous sites which are ideal for premium viticulture.





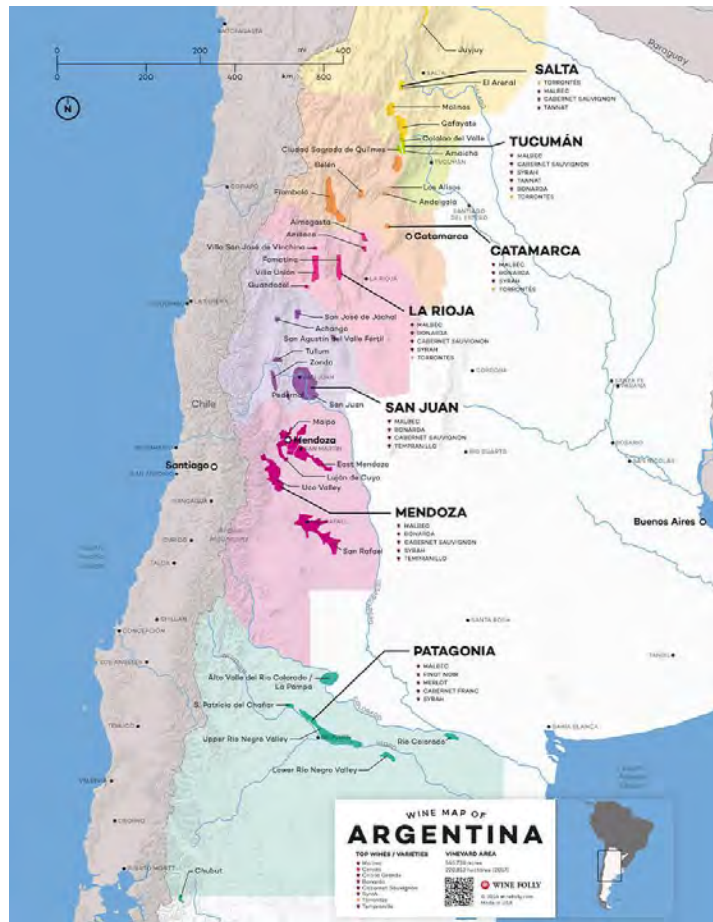
ARGENTINA – RED

2013 Catena Zapata Malbec Argentino	Mendoza	275
2013 Catena Zapata Adrianna Vineyard River Stones Malbec	Mendoza	335

ARGENTINA - WINE PRODUCTION

Argentina’s wine-growing regions can broadly be split into 3 areas:

El Norte, The North encompasses the regions of Salta, Tucumán and Catamarca. Salta contains the highest vineyards in the world at an altitude of around 3000m. This, in combination with a very dry climate provide exceptional conditions for viticulture. The native white grape, Torrontés, is the star here, although excellent Malbec and Cabernet Sauvignon is also produced.



Patagonia in the South, rivals New Zealand for the southernmost vineyards in the world. The cool, mountainous desert, much like in Central Otago, specialises in Pinot Noir, Chardonnay, Sauvignon Blanc, and Riesling. Of course, being Argentina, Malbec is also grown in abundance.

El Cuyo sits between these two areas and is home to La Rioja, San Juan and Mendoza. This is the heart of Argentinian wine production, with Mendoza and San Juan containing 95% of the country’s vineyards. Malbec is the star here, with Mendoza being world famous for its best examples. Excellent full-bodied chardonnay is also produced.



ITALY - RED

2021 Marchese Antinori Chianti Classico Riserva	<i>Tuscany</i>	175
2022 Marchesi Antinori Tignanello	<i>Tuscany</i>	725
2021 Marchesi Antinori Tignanello	<i>Tuscany</i>	725
2020 Marchesi Antinori Tignanello	<i>Tuscany</i>	825
2019 Marchesi Antinori Tignanello	<i>Tuscany</i>	850
2017 Marchesi Antinori Tignanello	<i>Tuscany</i>	915
2013 Marchesi Antinori Tignanello	<i>Tuscany</i>	995
2022 Sassicaia	<i>Tuscany</i>	1150
2021 Sassicaia	<i>Tuscany</i>	1425
2020 Sassicaia	<i>Tuscany</i>	1450
2017 Sassicaia	<i>Tuscany</i>	1575
2016 Sassicaia	<i>Tuscany</i>	1800
2013 Tenuta Dell Ornellaia DOC	<i>Bolgheri, Toscana</i>	1250

ITALY - WINE PRODUCTION

Italy is the home of several world-renowned wines such as *Chianti*, *Barolo*, *Prosecco*, *Valpolicella*, *Soave* and *Orvieto*. It has a rich and diverse wine heritage dating back more than four thousand years. It is divided into 20 administrative wine regions. Due to their geographical locations, they are clustered into three major domains: Northern, Central, and Southern Italy. The most significant wine regions when both quality and quantity are taken in consideration are *Tuscany*, *Piedmont* and *Veneto*.

NORTHERN ITALY

Northern Italy is composed of six growing regions: Piedmont, Valle D'Aosta, Lombardy, Trentino, Friuli and Veneto. Piedmont stands out as one of the two most sophisticated wine region in country, famous for its austere, tannic and floral red wines made from Nebbiolo. Sitting near northern border of the truly effective geographic wine-growing area with its continental climate, heavy fogs, and the rain-shadow effect from the neighbouring Alps. Northern Italian wines generally require a longer growing season to develop into some of the highest rated wines in the world.

CENTRAL ITALY

Central Italy is home to Tuscany, Umbria and Lazio facing the Tyrrhenian Sea while Romagna, Le Marche and Abruzzo on the east side of Apennine Mountains. The moderate, Mediterranean climate along with rolling hills, abundant sun, coastal winds from the Adriatic Sea and a mixture of limestone, sand, clay, and volcanic soils make this an environment conducive to vine growing and wine production. Sangiovese is widely produced in this region and prized for its acid structure, firm tannins, savoury characters, and rich aromas of dark cherries.

SOUTHERN ITALY

Appellations like Molise, Puglia and Sicily, with miles of coastline with fertile and flat prairie lands, produce vast amounts of wines that range wildly in quality. Offering a warm Mediterranean climate due to its geographical location being closer to equator with abundance of coastal winds from the surrounding ocean and subtle mountain influences. Southern Italy is generally dry and sunny, producing sweeter and more full-bodied red and white wines that are increasingly available, inexpensive, and improving in quality over a period of time.



There are four wine classifications in Italy to distinguish the quality of the wine, but we only focus on the highest 2 tiers.

- **Denominazione di Origine Controllata (DOC)** is the 2nd highest tier, which follows strict rules and produces high quality traditional wines. Each DOC has its own rules about permitted grape varieties, maximum harvest yields, and aging requirements.
- **Denominazione di Origine Controllata e Garantita (DOCG)** contains Italy’s finest wine and is the most exclusive of all the classifications, with 74 DOCG wines in circulation. DOCG wines have an additional “garantita,” or guarantee, by the Italian government to be wines of especially high quality. Each DOCG-labelled wine must pass a wine quality tasting panel, while DOC wines must merely be grown and made in accordance with the rules of the appellation.



SPAIN – RED

2009 Bodegas Vega Sicilia Valbuena

Ribera Del Duero

625

SPAIN - WINE PRODUCTION

Wine regions are spread throughout Spain and are predominantly very warm and dry. The exception is *Galicia* to the Northwest, where the Atlantic Ocean provides a significant cooling effect. This allows the crisp, fruity native white grape, Albariño, to thrive.

Tempranillo, Garnacha (Grenache) and Airén (predominantly used in brandy production) dominate elsewhere in Spain with the best examples coming from *La Rioja* and *Castilla y León* which track the Ebro and Duero River respectively through the northern central highlands. Vega Sicilia, Spain's most renowned producer is found in the latter, in a region known as the *Ribera del Duero*, close to the Portuguese border. *Andalucía* is located on the south coast and has one of the hottest climates of any wine growing region in the world. Most famous for the region of *Jerez*, this is the heart of Spain's sherry production.

There are several different quality classifications a wine can possess in Spain. Above the entry level table wines, these are broadly split into three levels. The IG (Identificación Geográfica) speaks to the wines geographical characteristics but is quite relaxed in terms of viticulture and winemaking. The next level up is DO (Denominación de Origen). This has a more regimented set of rules in terms of quality, dictating production levels, permitted varietals, winemaking, and aging regulations. Only *Rioja* and *Prioret* occupy the highest classification of DOCa (Denominación de Origen Calificada). To qualify the wines must have been a DO for ten years and must be valued at double the cost of the average DO wine.

The age classifications vary when used in different regions, and when applied to a white varietal or a rose. For the more prestigious regions of Rioja and Ribera del Duero, the red wines have the following appellation rules: **“Crianza”** must be aged for a minimum of one year in oak barrel, then one year in bottle before release, **“Reserva”** must be aged for 3 years, with one year in barrel, and two in bottle, and **“Gran Reserva”**, aged for five years, two in barrel and three in bottle.



USA – RED

2019 Cristom Vineyards Eileen Vineyard Pinot Noir	<i>Oregon</i>	285
2018 Duckhorn Vineyards Three Palms Vineyard Merlot	<i>Napa Valley</i>	365

USA - WINE PRODUCTION

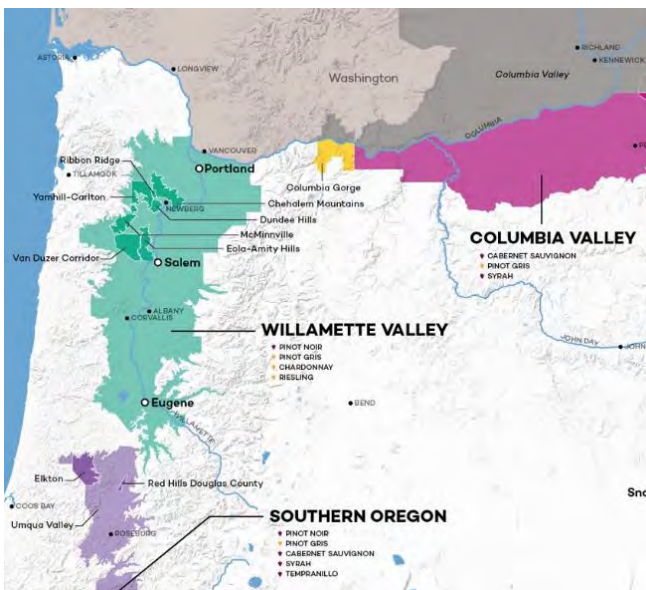
The USA is young when it comes to winemaking but is the 4th largest producer globally. This is perhaps not surprising when you take in to account the size of the country, and the variety of climates and landscapes available.

Although there are plantings country-wide, the bulk of the production lies along the West Coast. 80% of the wine produced comes from California, with most of the rest coming from Washington and Oregon.

California, being further south, has a warm Mediterranean climate. As such, it has the perfect conditions for big Chardonnay, Cabernet Sauvignon and Zinfandel. Close to the coast, areas of regular fog cool the temperature and allow Pinot Noir to thrive. Napa Valley and Sonoma County produce the highest quality wine from the region and are situated in the North Bay.

Oregon lies on a similar latitude as Burgundy and so it is no surprise that around 50% of the plantings are Pinot Noir, with Pinot Gris and Chardonnay also grown extensively. Most of the plantings are slightly inland, in the Willamette Valley, where a drier, more continental climate is found. This produces hot days and cold nights which are key for maintaining acidity and fresh fruit flavours in the more delicate examples of these varietals. A similar ethos is used in Washington, where most of the plantings are towards the Eastern regions of the state.

Oregon



California





AUSTRALIA – RED

2016 Yalumba The Octavius Old Vine Shiraz	<i>Barossa Valley, South Australia</i>	275
1998 Torbreck Runrig Shiraz	<i>Barossa Valley, South Australia</i>	850
2014 Penfolds RWT Shiraz	<i>Barossa Valley, South Australia</i>	650
2013 Penfolds Grange Shiraz	<i>Barossa Valley, South Australia</i>	2950
2012 Penfolds Grange Shiraz	<i>Barossa Valley, South Australia</i>	2850
2018 Paulmara Estates Cabernet Sauvignon	<i>Barossa Valley, South Australia</i>	295
2018 Paulmara Estates Shiraz	<i>Barossa Valley, South Australia</i>	225
2016 Giaconda Estate Vineyard Shiraz	<i>Beechworth, Victoria</i>	325
2011 Giaconda Estate Vineyard Shiraz	<i>Beechworth, Victoria</i>	355
2010 Giaconda Estate Vineyard Shiraz	<i>Beechworth, Victoria</i>	385
2004 Giaconda Warner Vineyard Shiraz	<i>Beechworth, Victoria</i>	435
2017 Jim Barry Armagh Shiraz	<i>Clare Valley, South Australia</i>	1025
2015 Jim Barry Armagh Shiraz	<i>Clare Valley, South Australia</i>	995
2009 Jim Barry Armagh Shiraz	<i>Clare Valley, South Australia</i>	1065
2008 Jim Barry Armagh Shiraz	<i>Clare Valley, South Australia</i>	1090
1997 Jim Barry Armagh Shiraz	<i>Clare Valley, South Australia</i>	1125
2001 Henschke Mount Edelston Shiraz	<i>Eden Valley, South Australia</i>	825
2000 Henschke Mount Edelston Shiraz	<i>Eden Valley, South Australia</i>	895
1999 Henschke Mount Edelston Shiraz	<i>Eden Valley, South Australia</i>	925
1998 Henschke Mount Edelston Shiraz	<i>Eden Valley, South Australia</i>	955
1991 Henschke Mount Edelston Shiraz	<i>Eden Valley, South Australia</i>	1025
2010 Henschke Hill of Grace Shiraz	<i>Eden Valley, South Australia</i>	3950
2009 Henschke Hill of Grace Shiraz	<i>Eden Valley, South Australia</i>	3950
2023 Leeuwin Art Series Shiraz	<i>Margaret River, Western Australia</i>	120
2022 Leeuwin Art Series Shiraz	<i>Margaret River, Western Australia</i>	135
2020 Leeuwin Art Series Shiraz	<i>Margaret River, Western Australia</i>	145
2016 Cullen Cabernet Sauvignon Merlot	<i>Margaret River, Western Australia</i>	325
2021 Leeuwin Art Series Cabernet Sauvignon	<i>Margaret River, Western Australia</i>	255
2017 Leeuwin Art Series Cabernet Sauvignon	<i>Margaret River, Western Australia</i>	425
2013 Vasse Felix 'Tom Cullity' Cabernet Malbec	<i>Margaret River, Western Australia</i>	450



AUSTRALIA RED CONTINUED

2017 Penfolds Bin 407 Cabernet Sauvignon	<i>South Australia</i>	305
2015 Penfolds Bin 407 Cabernet Sauvignon	<i>South Australia</i>	315
2014 Penfolds Bin 407 Cabernet Sauvignon	<i>South Australia</i>	325
2012 Penfolds Bin 407 Cabernet Sauvignon	<i>South Australia</i>	355
2010 Penfolds Bin 407 Cabernet Sauvignon	<i>South Australia</i>	375
2007 Penfolds Bin 407 Cabernet Sauvignon	<i>South Australia</i>	395
2006 Penfolds Bin 407 Cabernet Sauvignon	<i>South Australia</i>	445
2015 Penfolds Bin 389 Cabernet Shiraz	<i>South Australia</i>	375
1998 Penfolds Bin 389 Cabernet Shiraz	<i>South Australia</i>	575
2019 Penfolds St Henri Shiraz	<i>South Australia</i>	425
2018 Penfolds St Henri Shiraz	<i>South Australia</i>	425
2017 Penfolds St Henri Shiraz	<i>South Australia</i>	425
2015 Penfolds St Henri Shiraz	<i>South Australia</i>	450
2014 Penfolds St Henri Shiraz	<i>South Australia</i>	450
2013 Penfolds St Henri Shiraz	<i>South Australia</i>	450
2011 Penfolds St Henri Shiraz	<i>South Australia</i>	525
2024 Tolpuddle Pinot Noir	<i>Coal River Valley, Tasmania</i>	245
2015 Ten Minutes by Tractor Wallis Pinot Noir	<i>Mornington Peninsula, Victoria</i>	325
2015 Ten Minutes by Tractor Coolart Road Pinot Noir	<i>Mornington Peninsula, Victoria</i>	325

FRANCE – SOUTHERN FRANCE

2012 Crown Range Cellar, Patrick Leon Syrah	<i>Haut-Languedoc</i>	395
---	-----------------------	-----

FRANCE – CÔTE DU RHÔNE

2016 Chapoutier La Bernardine	<i>Chateauneuf-du-Pape, Southern Rhône</i>	385
2016 E. Guigal	<i>Chateauneuf-du-Pape, Southern Rhône</i>	365
2015 Famille Perrin Château de Beaucastel	<i>Chateauneuf-du-Pape, Southern Rhône</i>	475
2013 Famille Perrin Château de Beaucastel	<i>Chateauneuf-du-Pape, Southern Rhône</i>	495
2015 Famille Perrin Coudoulet de Beaucastel	<i>Côtes du Rhône, Southern Rhône</i>	225
2014 Famille Perrin Coudoulet de Beaucastel	<i>Côtes du Rhône, Southern Rhône</i>	245
2011 Egly-Ouriet Coteaux Champenois Ambonnay Rouge 'Cuvée des Grands Côtés'	<i>Ambonnay, France</i>	1095



FRANCE – RED BURGUNDY

2011 Dom. Jean-Jacques Confuron Romanée St Vivant Grand Cru	<i>Vosne-Romanée</i>	4500
2006 Dom. de la Romanée-Conti Romanée St Vivant Grand Cru*	<i>Vosne-Romanée</i>	21000
2007 Dom. de la Romanée-Conti Richebourg Grand Cru*	<i>Vosne-Romanée</i>	23500
2004 Dom. de la Romanée-Conti Richebourg Grand Cru*	<i>Vosne-Romanée</i>	21750
2001 Dom. de la Romanée-Conti Richebourg Grand Cru*	<i>Vosne-Romanée</i>	24225
2004 Dom. de la Romanée-Conti Romanée-Conti Grand Cru*	<i>Vosne-Romanée</i>	65000
2020 Dom. Thomson Mercurey 'Ez Chênes'	<i>Côte de Beaune</i>	295
2005 Dom. Louis Jadot des Héritiers Corton-Pougets Grand Cru	<i>Côte de Beaune</i>	1225
2022 Dom. Faiveley Corton Clos de Cortons Grand Cru 'Monopole'*	<i>Côte de Beaune</i>	1350
2019 Dom. Faiveley Corton Clos de Cortons Grand Cru 'Monopole'*	<i>Côte de Beaune</i>	1390
2018 Dom. Faiveley Corton Clos de Cortons Grand Cru 'Monopole'*	<i>Côte de Beaune</i>	1410
2016 Dom. Faiveley Corton Clos de Cortons Grand Cru 'Monopole'*	<i>Côte de Beaune</i>	1430
2003 Dom. Faiveley Corton Clos de Cortons Grand Cru 'Monopole'*	<i>Côte de Beaune</i>	1525
2022 Dom. Faiveley Gevrey Chambertin Les Cazetiers 1 ^{er} Cru	<i>Côte de Nuits</i>	675
2021 Dom. Faiveley Gevrey Chambertin Vieilles Vignes Grand Cru	<i>Côte de Nuits</i>	725
2011 Dom. Faiveley Chambertin Clos de Bèze 'Les Ouvrées Rodin' Grand Cru	<i>Côte de Nuits</i>	2450
2005 Dom. De L'Arlot Nuit St Georges 'Clos de L'Arlot' Premier Cru	<i>Côte de Nuits</i>	1250
2015 Dom. Thomson Gevrey-Chambertin "Les Evocelles"	<i>Côte de Nuits</i>	485
2014 Dom. Thomson Gevrey-Chambertin "Les Evocelles"	<i>Côte de Nuits</i>	465
2013 Dom. Thomson Gevrey-Chambertin "Les Evocelles"	<i>Côte de Nuits</i>	475
2011 Dom. Bachelet Charmes-Chambertin Vieilles Vignes Grand Cru	<i>Côte de Nuits</i>	4250
2019 Dom. Faiveley Clos de Vougeot Grand Cru	<i>Côte de Nuits</i>	1250
2016 Dom. Faiveley Clos de Vougeot Grand Cru	<i>Côte de Nuits</i>	1025
2014 Dom. Faiveley Clos de Vougeot Grand Cru	<i>Côte de Nuits</i>	975
2006 Dom. Faiveley Clos de Vougeot Grand Cru	<i>Côte de Nuits</i>	1375
2003 Dom. Faiveley Mazis-Chambertin Grand Cru	<i>Côte de Nuits</i>	1395
2003 Dom. Mongeard-Mugneret Grands-Echezeaux Grand Cru	<i>Côte de Nuits</i>	2450
2007 Dom. Comte Georges de Vogue Musigny Cuvée Vieilles Vignes Grand Cru	<i>Côte de Nuits</i>	4950



FRANCE - BORDEAUX

Many of the wines featured below have achieved a rating by Mr. Robert Parker. Around the globe individuals and wine critics alike have come to trust the palate of this world-famous wine professional. His score (which is out of 100) has, over the past 25 years, become a guide to the quality and expense of wines from Bordeaux. Here at the Rees, we stock a selection of wines from the different regions of Bordeaux. You can refer to any of Mr. Parker's tasting notes or supplementary research in the Rees Centre Library on Level 7.

LEFT BANK

ST ESTEPHE

		Parker Points	
2014 St Estèphe de Calon Ségur	<i>3ème Grand Cru</i>	-	795
1979 Château Cos d'Estournel	<i>2ème Grand Cru</i>	86	1100

PAUILLAC

1995 Château d'Armailhac Grand Cru	<i>5ème Grand Cru</i>	89	650
2020 Château Lynch Bages	<i>5ème Grand Cru</i>	90	795
2004 Château Lynch Bages	<i>5ème Grand Cru</i>	89	975
2001 Château Lynch Bages	<i>5ème Grand Cru</i>	89	1045
1998 Château Lynch Bages	<i>5ème Grand Cru</i>	89	1250
1996 Château Lynch Bages	<i>5ème Grand Cru</i>	94	1450
1986 Château Lynch Bages	<i>5ème Grand Cru</i>	92	1595
2004 Château Mouton Rothschild	<i>Premier Grand Cru</i>	92	4500
2004 Château Lafite Rothschild	<i>Premier Grand Cru</i>	95	7500
2003 Château Lafite Rothschild	<i>Premier Grand Cru</i>	100	8500
1996 Grand Vin de Château Latour	<i>Premier Grand Cru</i>	99	6850
2004 Grand Vin de Château Latour	<i>Premier Grand Cru</i>	95	5250
2020 Château Pedesclaux Fleur de Pedesclaux	<i>Grand Cru</i>	92	250



ST JULIEN

Parker Points

2004 Château Talbot	<i>4ème Grand Cru</i>	88	1025
1996 Château Leoville Barton	<i>2ème Grand Cru</i>	92	2250
2008 Grand Vin de Leoville du Marquis de las Cases	<i>2ème Grand Cru</i>	95	1250
1986 Grand Vin de Leoville du Marquis de las Cases	<i>2ème Grand Cru</i>	100	2950

2012 Croix de Beaucaillou	<i>Bordeaux</i>	89	525
---------------------------	-----------------	----	-----

MARGAUX

2014 Château Kirwan Charmes de Kirwan	<i>Bordeaux</i>	90	375
---------------------------------------	-----------------	----	-----

2003 Château Malescot St Exupery	<i>3ème Grand Cru</i>	92	675
2000 Château Malescot St Exupery	<i>3ème Grand Cru</i>	90	845
1998 Château Malescot St Exupery	<i>3ème Grand Cru</i>	90	750

2020 Château Palmer*	<i>3ème Grand Cru</i>	96	1750
2011 Château Palmer*	<i>3ème Grand Cru</i>	96	1950
2002 Château Palmer*	<i>3ème Grand Cru</i>	94	1650
2001 Château Palmer*	<i>3ème Grand Cru</i>	90	1850
2000 Château Palmer*	<i>3ème Grand Cru</i>	96	2450
1996 Château Palmer*	<i>3ème Grand Cru</i>	91	1850
1995 Château Palmer*	<i>3ème Grand Cru</i>	90	1950

GRAVES / PESSAC-LÉOGNAN

2009 Château Haut Brion	<i>Premier Grand Cru</i>	100	5250
2004 Château Haut Brion	<i>Premier Grand Cru</i>	95	4350



RIGHT BANK

POMEROL

		Parker Points	
2014 L'Hospitalet de Gazin	<i>Bordeaux</i>	-	345
2018 Blason de l'Évangile	<i>Bordeaux</i>	-	395
1993 Château Eglise Clinet	<i>Bordeaux</i>	87	1275
1990 Château Eglise Clinet	<i>Bordeaux</i>	92	1950
1998 Château L'Évangile	<i>Bordeaux</i>	92	1925
1990 Château L'Évangile	<i>Bordeaux</i>	96	2250
2010 Petrus	<i>Bordeaux</i>	100	34500

ST EMILION

2001 Château Troplong Mondot	<i>Premier Grand Cru B</i>	93	795
2000 Château Troplong Mondot	<i>Premier Grand Cru B</i>	95	975
1995 Château Troplong Mondot	<i>Premier Grand Cru B</i>	92	895
2010 Château La Croizille	<i>Grand Cru</i>	91	525
1998 Château Angélys	<i>Premier Grand Cru A</i>	93	2250
2017 Château Pavie	<i>Premier Grand Cru A</i>	97	1950
2003 Château Pavie	<i>Premier Grand Cru A</i>	98	2450
2001 Château Pavie	<i>Premier Grand Cru A</i>	96	2650
2004 Château Cheval Blanc	<i>Premier Grand Cru A</i>	90	3250

CÔTES DE BOURG

2007 Roc de Cambes	<i>Bordeaux</i>	-	445
--------------------	-----------------	---	-----



DESSERT WINES – 375ml BOTTLE

2022 Prophets Rock Vin de Paille	<i>Bannockburn, Central Otago</i>	145
2025 Valli Dolce Vita Late Harvest Riesling (750ml)	<i>Waitaki</i>	160
2016 Pegasus Bay Aria Late Picked Riesling (750ml)	<i>Waipara</i>	95
2019 Pegasus Bay Finale Sauvignon/Semillon	<i>Waipara</i>	105
2016 Pegasus Bay Encore Noble Riesling	<i>Waipara</i>	115
2013 Pegasus Bay Encore Noble Riesling	<i>Waipara</i>	135
2011 Pegasus Bay Encore Noble Riesling	<i>Waipara</i>	145
2010 Pegasus Bay Encore Noble Riesling	<i>Waipara</i>	155
2008 Pegasus Bay Encore Noble Riesling	<i>Waipara</i>	175
2007 Pegasus Bay Encore Noble Riesling	<i>Waipara</i>	185
2008 Cloudy Bay Noble Riesling	<i>Marlborough</i>	80
2011 Greywacke Late Harvest Riesling	<i>Marlborough</i>	85
2015 Framingham Noble Riesling	<i>Marlborough</i>	90
2008 Ata Rangi Kahu Botrytis Riesling	<i>Wairarapa</i>	95
2021 Villa Maria Noble Riesling	<i>Hawkes Bay</i>	75
2017 d’Arenberg The Noble Semillon Sauvignon Blanc	<i>Adelaide Hills</i>	80
2017 Château d’Arche Sauternes	<i>Bordeaux</i>	140
1990 Château Rayne Vigneau Sauternes Premier Cru	<i>Bordeaux</i>	225
2019 Château d’Yquem Sauternes Premier Cru	<i>Bordeaux</i>	995
2016 Château d’Yquem Sauternes Premier Cru	<i>Bordeaux</i>	815
2015 Château d’Yquem Sauternes Premier Cru	<i>Bordeaux</i>	1125
2014 Château d’Yquem Sauternes Premier Cru	<i>Bordeaux</i>	925
2008 Château d’Yquem Sauternes Premier Cru	<i>Bordeaux</i>	745
1990 Château d’Yquem Sauternes Premier Cru	<i>Bordeaux</i>	1145
1988 Chateau d’Yquem Sauternes Premier Cru	<i>Bordeaux</i>	1185
1990 Château d’Yquem Sauternes Premier Cru (1.5L)	<i>Bordeaux</i>	4500

PORT

1994 Taylors Fladgate	<i>Portugal</i>	395
1983 Warre’s Vintage Port	<i>Portugal</i>	515
1977 Calem Vintage Port	<i>Portugal</i>	425